



2012 HEALTH INSURANCE COVERAGE ESTIMATES

SHADAC Webinar featuring U.S. Census Bureau experts

September 23, 2013, 1:30 PM EDT

You will be connected to broadcast audio through your computer. You can also connect via telephone: **(800) 705-7436**

Slides and handouts at: **<http://www.shadac.org/estimateswebinar>**

Technical Items

- For those dialing in: All phones are muted
- Submit questions using the chat window at any time during the webinar
- Troubleshooting:
 - Call Readytalk's help line: (800) 843-9166
 - Ask for help using the chat feature
- Download the slides at <http://www.shadac.org/estimateswebinar>
- Webinar archive will be posted on SHADAC's web site
 - E-mail notice will be sent to participants

Presenters



Julie Sonier
SHADAC
Deputy Director

Brett O'Hara
Chief, Health and Disability Statistics
Branch, U.S. Census Bureau

Jennifer Day
Assistant Division Chief for
Employment Characteristics,
U.S. Census Bureau



Joanna Turner
SHADAC
Senior Research Fellow

Lucinda Dalzell
Chief, Small Area Estimates Branch,
U.S. Census Bureau

Mark Bauder
Mathematical Statistician,
U.S. Census Bureau

CPS, ACS, and SAHIE

- Current Population Survey (CPS)
 - 2012 estimates released September 17, 2013
- American Community Survey (ACS)
 - 2012 estimates released September 19, 2013
- Small Area Health Insurance Estimates (SAHIE)
 - 2011 estimates released August 29, 2013

Design Differences

	CPS	ACS	SAHIE
Method	Survey of civilian non-institutionalized population	Survey of U.S. population (including group quarters)	Combine ACS estimates with administrative data
Annual housing units interviewed	About 76,000	About 2.3 million	N/A
Geography	Nation, states	Nation, states, sub-state	Nation, state, county
Mode	Phone and in-person	Mail, phone, and in-person	N/A
Uninsurance: Measure	Uninsured all year	Point-in-time	Point-in-time
Uninsurance: Years available	1987 to 2012	2008 to 2012	2008 to 2011 (Using the ACS)*

* SAHIE estimates using the CPS available for 2000, 2001, and 2005 to 2007

Design Differences

	CPS	ACS	SAHIE
Method	Survey of civilian non-institutionalized population	Survey of U.S.	Combine ACS estimates with administrative data
Annual housing units interviewed	About 76,000		
Geography	Nation, states		ation, state, county
Mode	Phone and in-person	Mail, phone, and in-person	N/A
Uninsurance: Measure	Uninsured all year	Point-in-time	Point-in-time
Uninsurance: Years available	1987 to 2012	2008 to 2012	2008 to 2011 (Using the ACS)*

CPS

- 2-year averages: changes in state estimates over time
- 3-year averages: compare across states within a year

* SAHIE estimates using the CPS available for 2000, 2001, and 2005 to 2007

Design Differences

	CPS	ACS	SAHIE
Method	Survey of civilian non-institutionalized population	Survey of U.S. population (including group quarters)	Combine ACS estimates with administrative data
Annual housing units interviewed	About 76,000	About 2.3 million	N/A
Geography	Nation, states	Nation, states, sub-state	Nation, state, county
Mode	Phone and in-person	Mail, phone, and in-person	N/A
Uninsurance: Measure	Uninsured all year	Point-in-time	Point-in-time
Uninsurance: Years available	1987 to 2012	2008 to 2012	2008 to 2011 (Using the ACS)*

* SAHIE estimates using the CPS available for 2000, 2001, and 2005 to 2007

Design Differences

	CPS	ACS	SAHIE
Method	Survey of civilian	Survey of U.S. population (including group quarters)	Combine ACS estimates with administrative data
Annual household units interviewed	ACS Census Bureau published estimates restricted to the civilian non-institutionalized population	About 2.3 million	N/A
Geography		Nation, states, sub-state	Nation, state, county
Mode	Phone and in-person	Mail, phone, and in-person	N/A
Uninsurance: Measure	Uninsured all year	Point-in-time	Point-in-time
Uninsurance: Years available	1987 to 2012	2008 to 2012	2008 to 2011 (Using the ACS)*

* SAHIE estimates using the CPS available for 2000, 2001, and 2005 to 2007

Design Differences

	CPS	ACS	SAHIE
Method	Survey of civilian non-institutionalized population	Survey of U.S. population (including group quarters)	Combine ACS estimates with administrative data
Annual housing units interviewed	About 76,000	About 2.3 million	N/A
Geography	Nation, states	Nation, states, sub-state	Nation, state, county
Mode	Phone and in-person	Mail, phone, and in-person	N/A
Uninsurance: Measure	Uninsured all year	Point-in-time	Point-in-time
Uninsurance: Years available	1987 to 2012	2008 to 2012	2008 to 2011 (Using the ACS)*

* SAHIE estimates using the CPS available for 2000, 2001, and 2005 to 2007

Design Differences

	CPS	ACS	SAHIE
Method	Survey non-insured population		Combine ACS estimates with administrative data
Annual housing units interviewed	About 7		N/A
Geography	Nation,		Nation, state, county
Mode	Phone person		N/A
Uninsurance: Measure	Uninsured all year	Point-in-time	Point-in-time
Uninsurance: Years available	1987 to 2012	2008 to 2012	2008 to 2011 (Using the ACS)*

- Data Sources for SAHIE:**
- ACS
 - Population estimates
 - Federal income tax returns
 - Supplemental Nutrition Assistance program records
 - County Business Patterns
 - Medicaid/CHIP records
 - 2010 Census

* SAHIE estimates using the CPS available for 2000, 2001, and 2005 to 2007

Design Differences

	CPS	ACS	SAHIE
Method	Survey of civilian non-institutionalized population	Survey of U.S. population (including group quarters)	Combine ACS estimates with administrative data
Annual housing units interviewed	About 76,000	About 2.3 million	N/A
Geography	Nation, states	Nation, states, sub-state	Nation, state, county
Mode	Phone and in-person	Mail, phone, and in-person	N/A
Uninsurance: Measure	Uninsured all year	Point-in-time	Point-in-time
Uninsurance: Years available	1987 to 2012	2008 to 2012	2008 to 2011 (Using the ACS)*

* SAHIE estimates using the CPS available for 2000, 2001, and 2005 to 2007

Design Differences (2)

	CPS	ACS	SAHIE
Coverage types	Uninsured, Insured Private <ul style="list-style-type: none"> • Employer • Direct purchase Public <ul style="list-style-type: none"> • Medicare • Medicaid • Military (TRICARE & VA) 	Uninsured, Insured Private <ul style="list-style-type: none"> • Employer • Direct purchase Public <ul style="list-style-type: none"> • TRICARE • Medicare • Medicaid • VA 	Uninsured, Insured
Disability status	Yes	Yes	No
Health status	Yes	No	No
Employer size	Yes	No	No
Medical out-of-pocket expenditures	Yes	No	No
Housing values	No	Yes	No

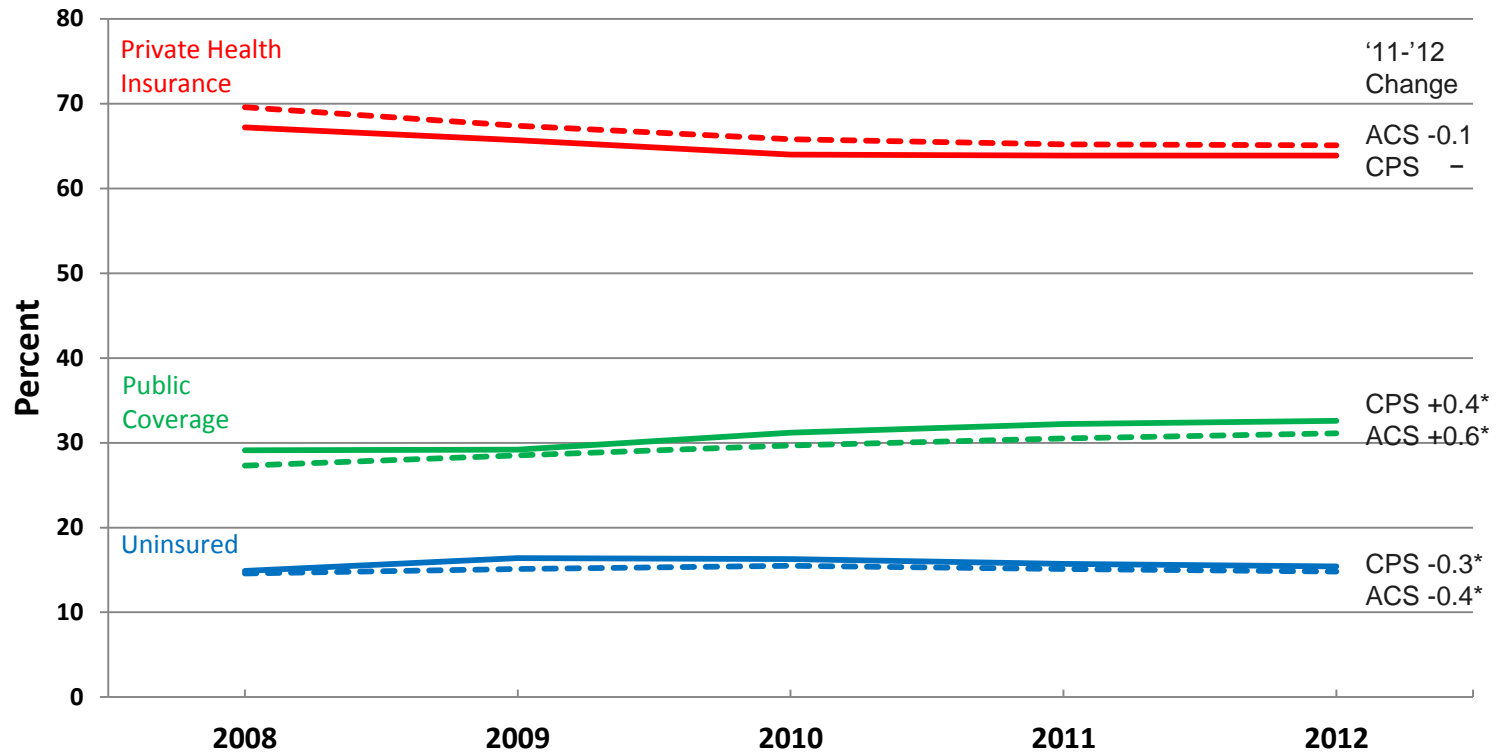
Guidance on When to Use Each Source

	CPS	ACS	SAHIE
Trends over long time period	✓ 1987 forward		
State estimates	✓ 2-year averages	✓	
Sub-state estimates		✓ 1-yr for pop > 65,000 3-yr for pop > 20,000 5-yr for pop < 20,000	✓ 1-year for all counties
Small subpopulations		✓	✓ Age, income, poverty, sex, race/ethnicity (state only)
Coverage by type	✓	✓	Under investigation
Custom tabs from microdata	✓	✓	

CPS and ACS

2012 ESTIMATES

Comparisons over time: Coverage type (all ages)

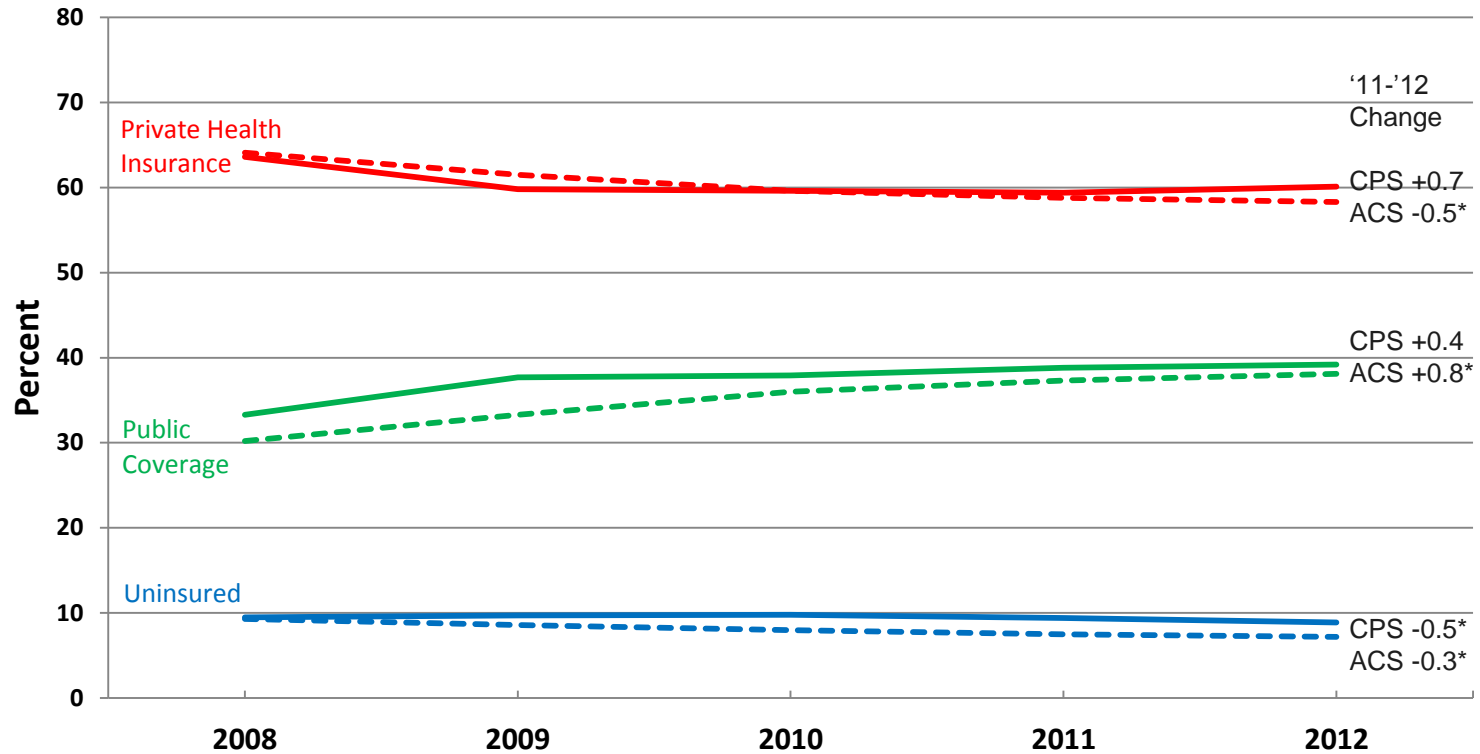


Solid lines indicate CPS; Dotted lines indicate ACS.

* Within-survey change from 2011 to 2012 is statistically significant at the 90 percent confidence interval.

- Represents or rounds to zero.

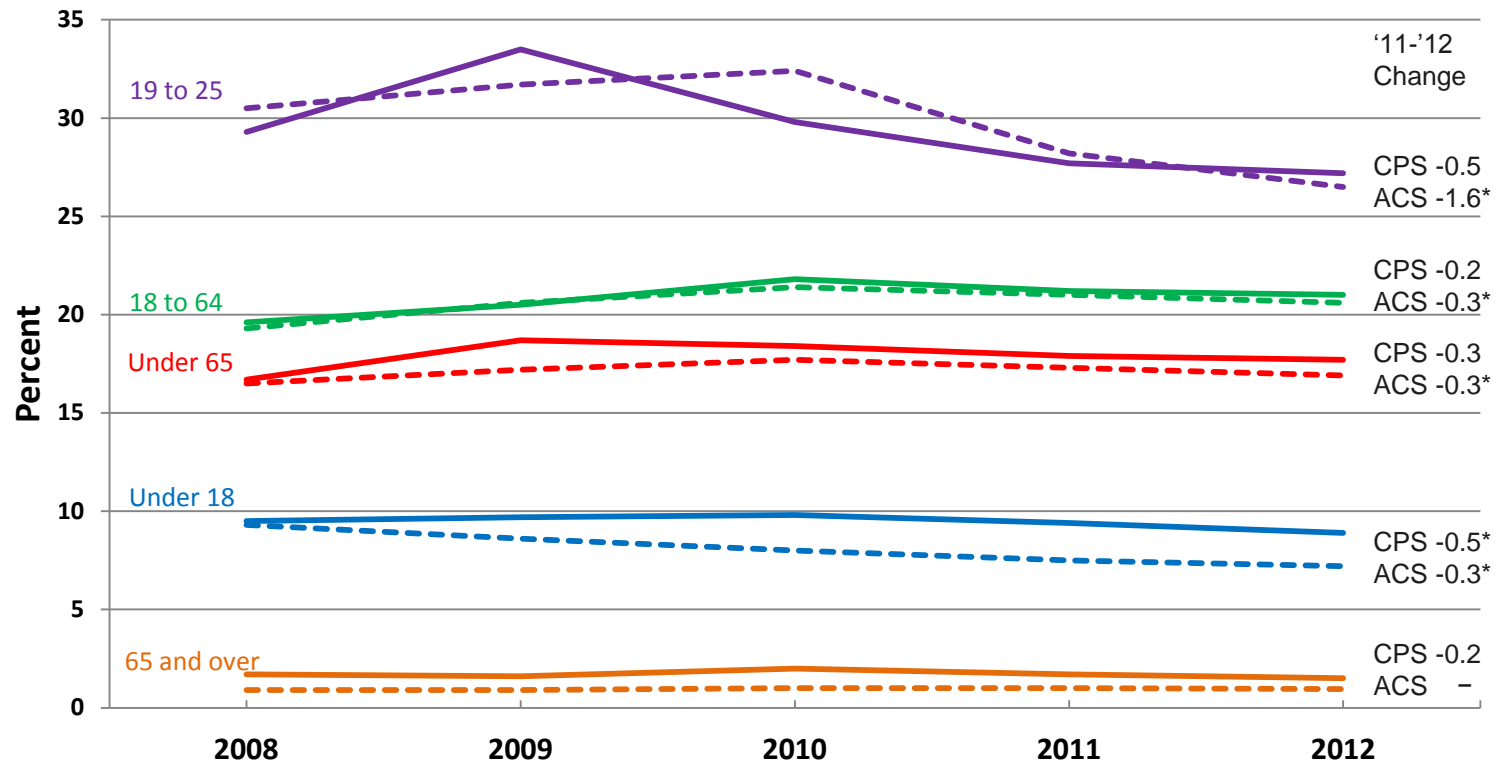
Comparisons over time: Coverage type, children (<18 years)



Solid lines indicate CPS; Dotted lines indicate ACS.

* Within-survey change from 2011 to 2012 is statistically significant at the 90 percent confidence interval.

Comparisons over time: Percent uninsured by age group

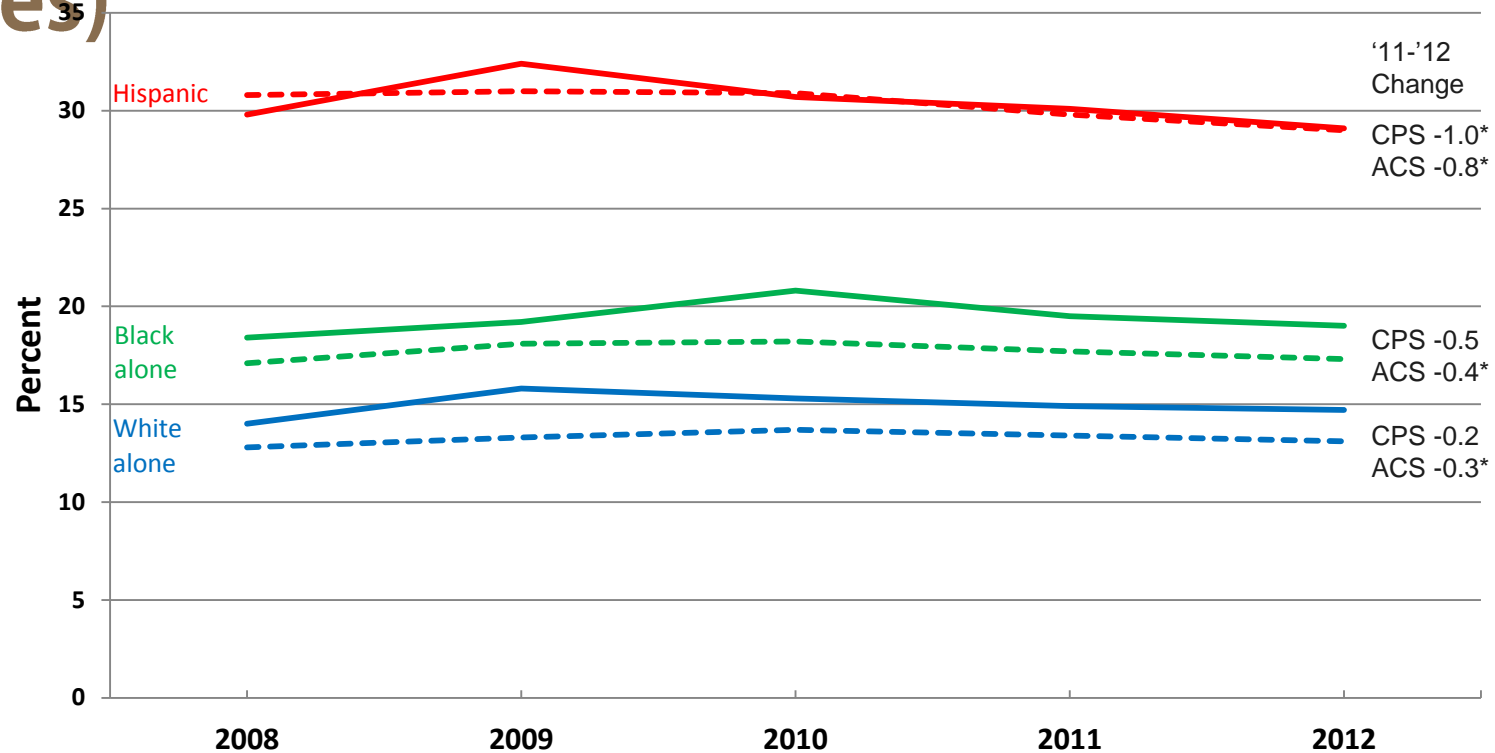


Solid lines indicate CPS; Dotted lines indicate ACS.

* Within-survey change from 2011 to 2012 is statistically significant at the 90 percent confidence interval.

- Represents or rounds to zero.

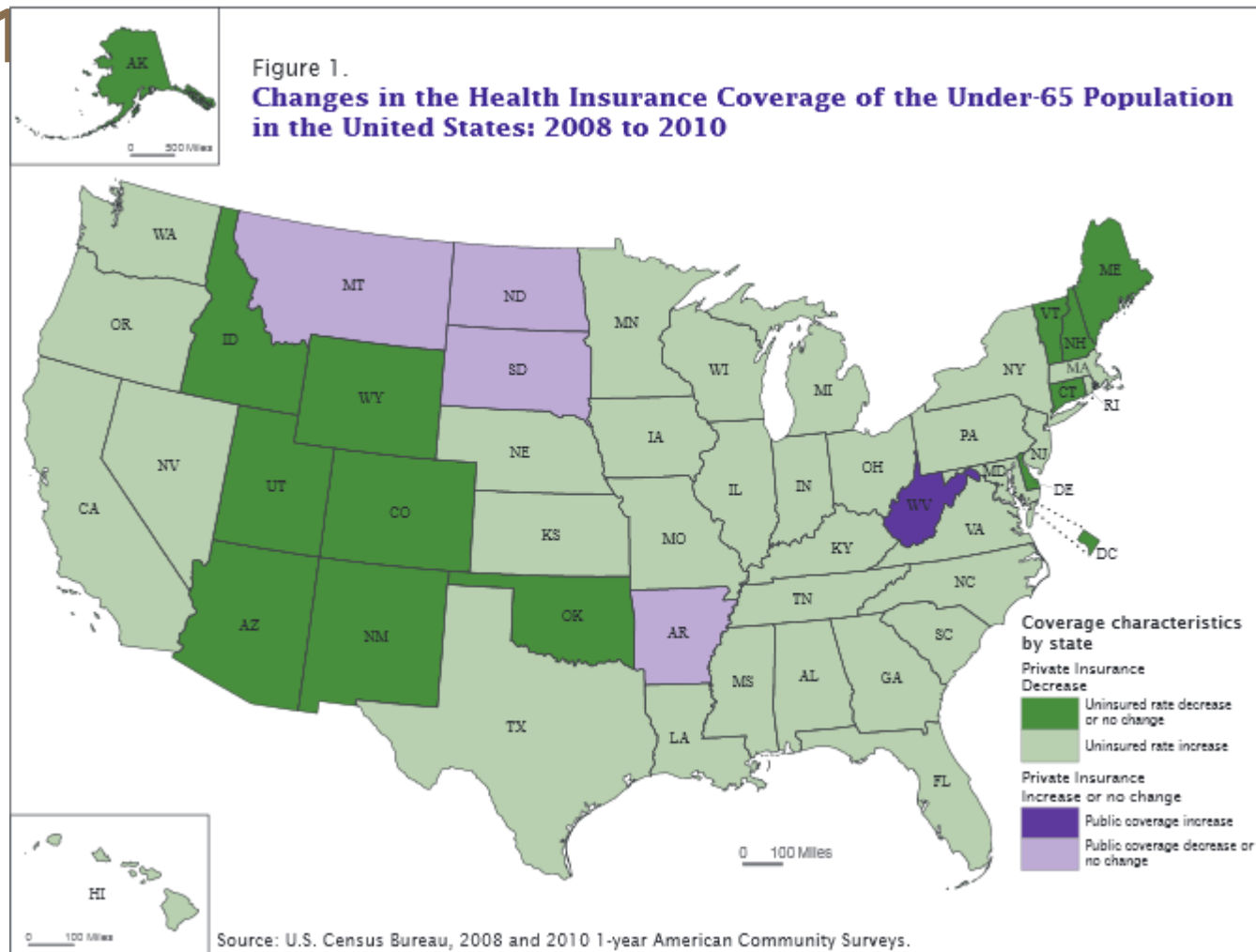
Comparisons over time: Percent uninsured by race/ethnicity (all ages)



Solid lines indicate CPS; Dotted lines indicate ACS.

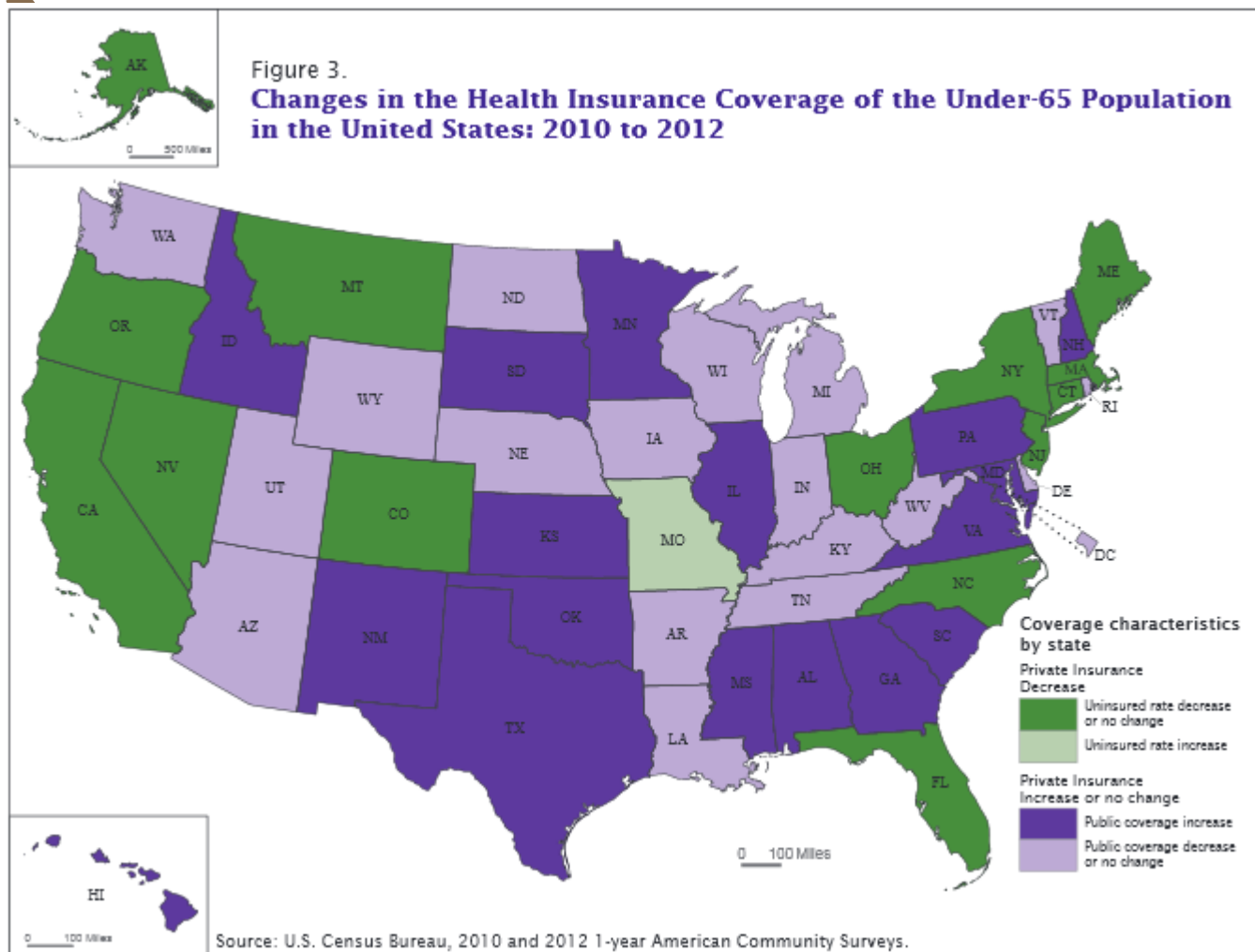
* Within-survey change from 2011 to 2012 is statistically significant at the 90 percent confidence interval.

Mitigating the Loss of Private Insurance with Public Coverage for Under-65 Population: 2008 to 2010



Source: U.S. Census Bureau ACS Brief

Mitigating the Loss of Private Insurance with Public Coverage for Under-65 Population: 2008 to 2011



Source: U.S. Census Bureau ACS Brief

What's New for ACS

- 2 new detailed health insurance coverage tables for young adults 19-25 (B27022 & B27023)
- Young adults added to table S2701 – total uninsured 19-25
- 113th Congressional Districts available
- First release based on 2010 Census definitions for Public Use Microdata Areas (PUMAs), Urban Areas, and Urban/Rural

ACS Public Use Data Release: 2012 Estimates

- Public Use Microdata Samples (PUMS) available fall 2013
 - 1% public use microdata sample (1% of population)
 - The smallest identifiable geographic unit is the PUMA, containing at least 100,000 persons
 - PUMAs are generally groups of counties or parts of counties, but there are exceptions
 - PUMAs do not cross state boundaries

Upcoming ACS Data Releases: 3 & 5 Year

- 2010-2012 3-year estimates for areas with population >20,000
 - American FactFinder release: October 24
 - PUMS: TBD
- 2008-2012 5-year estimates for all geographic areas
 - American FactFinder release: December 5
 - PUMS: TBD
 - **First 5-year file with health insurance coverage estimates**

MN Population Center Releases (IPUMS)

- 2012 CPS data will be available soon
 - SHADAC-Enhanced CPS will be available soon
- ACS data files will be released about 1-2 weeks after available from the Census Bureau
- SHADAC Health Insurance Unit (HIU) and Federal Poverty Guidelines (FPG) variables for 2012 CPS and ACS will be available soon

<http://www.ipums.org>

SHADAC Data Center Releases

- Updating with:
 - 2012 CPS
 - 2012 SHADAC-Enhanced CPS
 - 2012 ACS

Tables

Expert view | Comma Separated List (.csv file) | PDF | Save These Results

Health Insurance Coverage Estimates, CPS, All Ages, All FPL, Alabama

	Population	Uninsured		Insured		Private Coverage							
		Total	%	Total	%	Employer	%						
Age (Detailed)		%	Count	%	Count	%	Count	%					
0-6	340	3.1	11	3.43	96.9	330	1.43	52.4	179	50.3	172	5.02	
6-17	780	3.9	30	3.08	96.2	750	1.08	68.7	836	3.36	63.6	487	3.02
18-24	850	4.9	42	3.19	95.1	813	1.09	68.7	587	3.42	63.7	545	3.4
18-24	443	25.2	112	3.9	74.8	332	3.9	65.6	295	4.31	49.7	226	4.19

Use our table generator to find the latest national and state-level uninsurance estimates.

► Create Tables

Charts

Percent Uninsured District of Columbia, Maryland, Virginia 2005 - 2009

Year	Virginia	Maryland	District of Columbia
2005	12.5	11.5	10.5
2006	12.5	11.5	10.5
2007	12.5	11.5	10.5
2008	12.5	11.5	10.5
2009	12.5	11.5	10.5

Use the chart and graph generator to get a visual display of topline estimates or demographic trends

► Create Charts

<http://www.shadac.org/datacenter>

What's New for CPS: 2013 Content Test

- Health insurance coverage (Pascale, 2013 JSM)
 - Improved all year coverage measure
 - Add point-in-time coverage measure
 - New questions to measure exchange participation
 - New questions on employer offered health insurance coverage
- Income (Semega and Welniak, 2013 JSM)
 - Improve data quality, take better advantage of an automated instrument, reflect changing retirement environment, improve clarification and reporting of asset income

SAHIE

2011 ESTIMATES

Small Area Health Insurance Estimates (SAHIE)

[Main](#)[About SAHIE](#)[Data](#)[Methodology](#)[Publications](#)[Related Sites](#)[Contact Us](#)

Quick Links

- [About SAHIE](#)
- [Frequently Asked Questions](#)
- [Publications](#)
- [Contact Us](#)

Interactive Data and Mapping Tool



Upcoming Releases

The 2012 SAHIF release is

Model-based Small Area Health Insurance Estimates (SAHIE) for Counties and States

The Small Area Health Insurance Estimates (SAHIE) program of the U.S. Census Bureau produces model-based estimates of people with and without health insurance for all counties and states, regardless of population size, and for demographic and income subgroups. It is the only source of single-year health insurance estimates for every county in the U.S. SAHIE data can be used to analyze geographic variation in health insurance coverage, as well as disparities in coverage by race/ethnicity, sex, age and income level. Because consistent estimates are available from 2008 on, SAHIE can reveal changes over time.

Latest Release

The 2011 County and State Health Insurance Estimates by Demographic and Income Characteristics were released in August 2013.

- [2011 SAHIE Highlights](#) [PDF - 2M]
- [Health Insurance Data](#)
- [Methodology](#)

<http://www.census.gov/did/www/sahie/>

SAHIE Interactive Tool Data Tab

Small Area Health Insurance Estimates



Select Your Search Criteria Below:

Data Map Trends

Year: 2011

Geography: -All-

- All-
- Alabama
- Alaska
- Arizona
- Arkansas

Show Counties

Age: Under 65 years

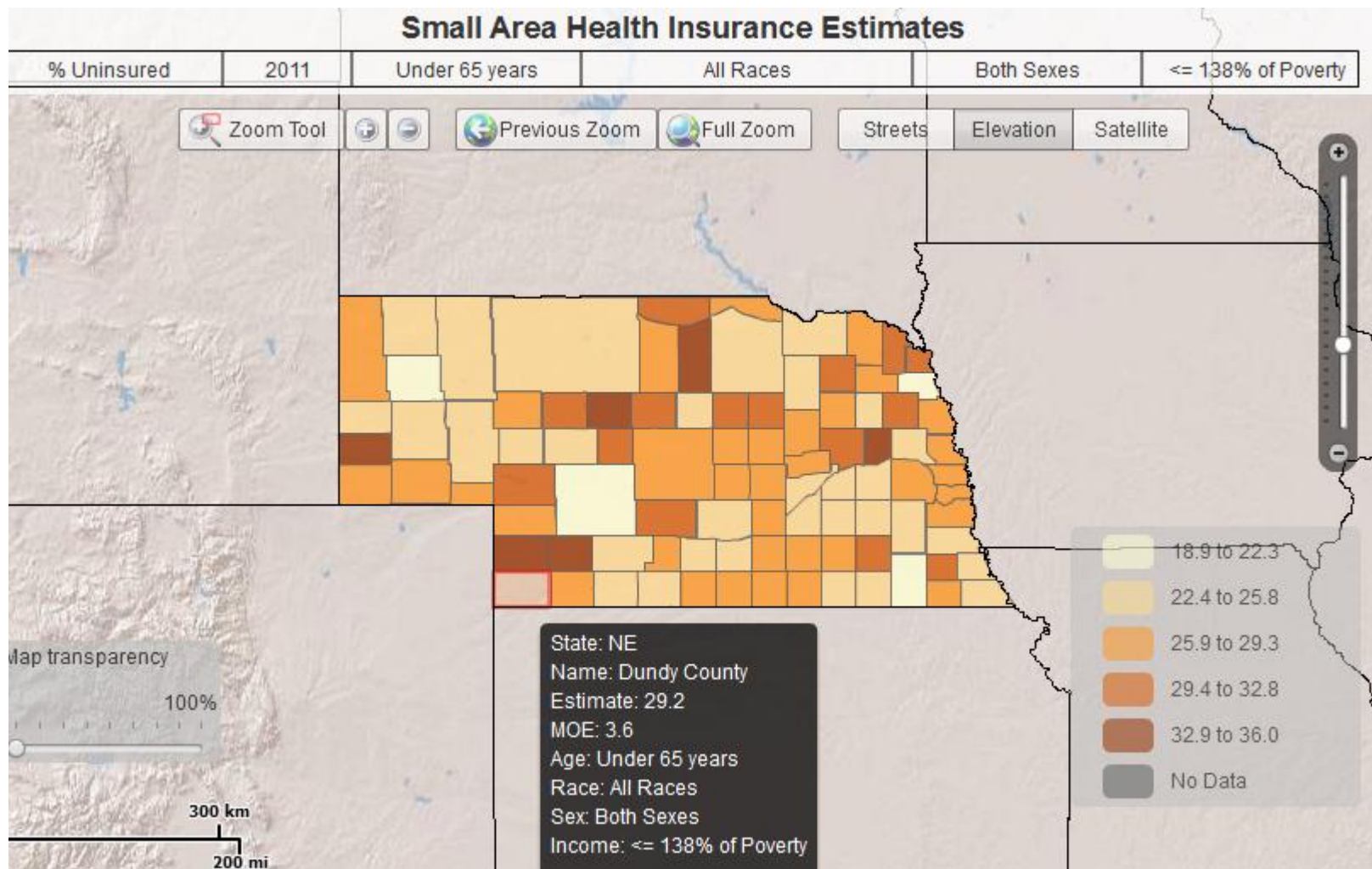
Race: All Races

Sex: Both Sexes

Income: <= 138% of Poverty

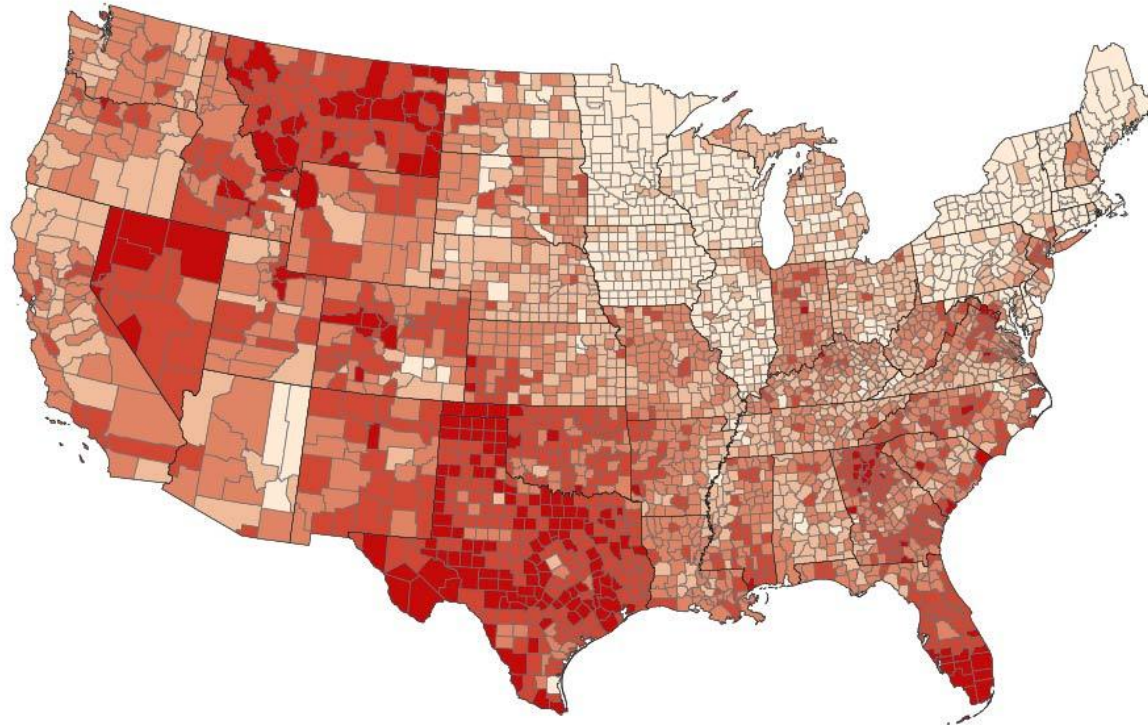
Year	ID	Name	Demographic Group		Uninsured				Insured	
			Number	MOE	Number	MOE	%	%MOE	Number	MOE
2011	01000	Alabama	1,174,414	12,597	337,025	9,806	28.7	0.8	837,389	12,666
2011	01001	Autauga Count	10,502	521	3,003	356	28.6	3.0	7,498	464
2011	01003	Baldwin Count	35,403	1,404	11,347	1,132	32.0	2.8	24,056	1,338
2011	01005	Barbour Count	7,949	294	2,159	240	27.2	2.8	5,790	291
2011	01007	Bibb County, A	5,283	246	1,368	174	25.9	2.9	3,915	227
2011	01009	Blount County,	12,723	525	4,115	424	32.3	3.0	8,608	497
2011	01011	Bullock County	3,217	131	710	96	22.1	2.7	2,507	127
2011	01013	Butler County,	6,625	257	1,563	193	23.6	2.7	5,061	254
2011	01015	Calhoun Coun	31,659	1,070	8,888	924	28.1	2.7	22,771	1,095
2011	01017	Chambers Co	10,189	389	2,667	319	26.2	2.9	7,522	398
2011	01019	Cherokee Cou	6,923	291	1,925	218	27.8	2.8	4,999	277
2011	01021	Chilton County	12,125	454	3,971	404	32.8	3.0	8,153	450
2011	01023	Choctaw Cour	3,371	159	988	115	29.3	3.0	2,383	143

SAHIE Interactive Tool Map Tab



SAHIE County Uninsured Rates, 2011

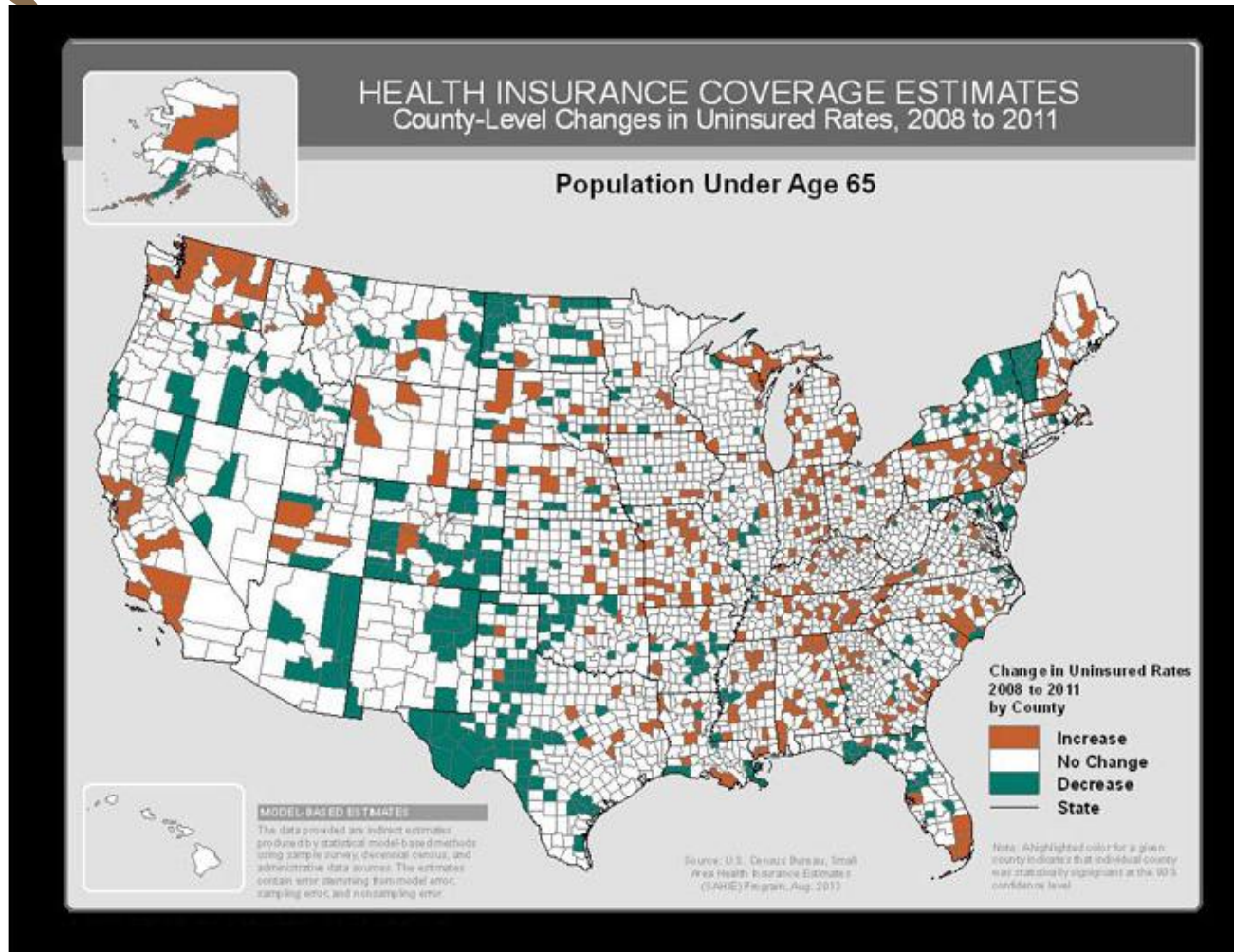
Uninsured Living at or Below 138% of Poverty,
Under Age 65



Source: U.S. Census Bureau, Small Area Health Insurance Estimates (SAHIE) Program, Aug. 2013
U.S. Department of Commerce, Economic and Statistics Administration

Source: U.S. Census Bureau

SAHIE Change in County Uninsured Rates



Source: U.S. Census Bureau

Census Bureau Resources

- Updated health insurance page
 - <http://www.census.gov/hhes/www/hlthins/index.html>
- American FactFinder summary tables
 - <http://factfinder2.census.gov>
- “Mitigating the Loss of Private Insurance with Public Coverage for Under-65 Population: 2008 to 2012” (ACS Brief)
 - <http://www.census.gov/prod/2013pubs/acsbr12-11.pdf>

Census Bureau Resources (2)

- Updated SAHIE page
 - <http://www.census.gov/did/www/sahie>
- Guidance on when to use different data sources
 - <http://www.census.gov/hhes/www/hlthins/about/index.html>

U.S. Census Bureau Health Insurance Data Source Comparison Table				
	CPS ASEC	ACS	SAHIE	SIPP
Principal Purpose	The Annual Social and Economic Supplement to the Current Population Survey (CPS ASEC) is designed primarily to provide monthly labor force data. However, in addition, it provides supplemental data on health insurance, work experience, income, noncash benefits, and migration.	The American Community Survey (ACS) is an annual household survey designed to replace the Census 2000 sample data (i.e., the "long form") of the Decennial Census. The ACS collects detailed demographic, socioeconomic and economic information.	The Small Area Health Insurance Estimates (SAHIE) Program produces model-based estimates of health insurance coverage for all counties and states, regardless of population size, by demographic and income subgroup. It is the only source of single-year health insurance estimates for every county in the U.S. SAHIE data can be used to analyze geographic variation in health insurance coverage, as well as disparities in coverage by race/ethnicity, sex, age and income level. Because consistent estimates are available from 2008 on, SAHIE can reveal changes over time.	The Survey of Income and Program Participation (SIPP) was designed to collect information on income, labor force participation, program participation and eligibility, and general demographics. Detailed health insurance data is collected within each wave of the core. The SIPP's unique contribution is providing longitudinal data to measure changes across time. Each SIPP Panel produces monthly health insurance data for up to four years.
Represented Geographies	Nation, states, regions, and divisions. ¹	<ul style="list-style-type: none"> • 1-year estimates for areas with population 65,000 or more. • 3-year estimates for areas with populations of 20,000 or more. • 5-year estimates for all entities. 	1-year estimates for all states and counties.	National and regional estimates. ¹

SHADAC Resources

- “Comparing Federal Government Surveys that Count the Uninsured”
 - <http://shadac.org/publications/comparingfedsurveys2013>
- “Small Area Health Insurance Estimates from the Census Bureau: 2008 and 2009” (Brief #26)
 - http://www.shadac.org/files/shadac/publications/SHADAC_Brief26.pdf

SHADAC Resources (2)

- ACS tables from American FactFinder showing change in health insurance coverage for states and counties
- <http://shadac.org/acskomparisontables2013>



Uninsurance Rates for Minnesota in 2011 and 2012

Subject	2011		2012	
	Population	% Uninsured	Population	% Uninsured
Total civilian noninstitutionalized population				
United States	306,560,685	15.1	308,896,460	14.8*
Minnesota	5,286,728	8.8	5,319,783	8.0*
Age				
Under 18 years	1,276,035	6.3	1,275,509	5.4*
18 to 64 years	3,340,333	11.5	3,344,084	10.6*
19 to 25 years	(no data)	(no data)	490,345	14.5
65 years and older	670,360	0.3	700,190	0.3
Race/Ethnicity				
White alone	4,531,711	7.5	4,552,775	6.9*
Black or African American alone	271,528	15.1	278,768	14.0
American Indian and Alaska Native alone	59,443	22.5	53,223	21.2
Asian alone	215,580	12.2	226,570	9.7*
Native Hawaiian and Other Pacific Islander alone	N	N	N	N
Some other race alone	74,189	40.6	71,750	33.7*
Two or more races	133,514	13.6	134,473	9.6*
White alone, not Hispanic or Latino	4,378,122	6.8	4,382,481	6.2*
Hispanic or Latino (of any race)	253,235	29.7	260,511	27.5
Citizenship Status				
Native born	4,900,965	7.7	4,933,547	6.9*
Foreign born	385,763	23.8	386,236	21.5*
Naturalized	177,552	11.8	181,402	9.5*
Not a citizen	208,211	34.0	204,834	32.0

Contact Information

Direct inquires to
Joanna Turner, turn0053@umn.edu
or shadac@umn.edu



www.shadac.org

 [@shadac](https://twitter.com/shadac)