



August 2024

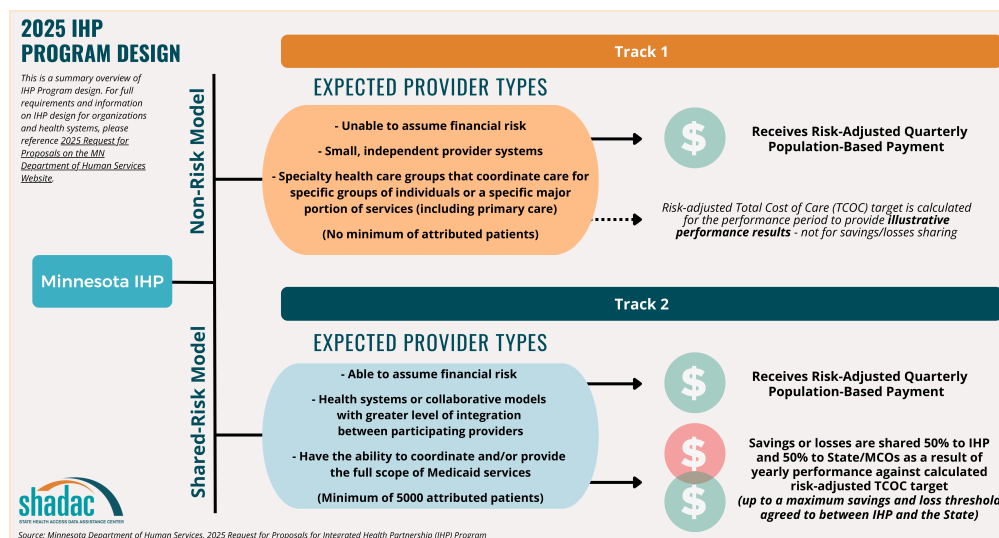
## SHADAC Announcements

### California Health Care Foundation (CHCF) Brief: Language Barriers and Health Equity—The Challenges Faced by Californians with Limited English Proficiency

California is home to approximately 2.7 million adults with Limited English Proficiency (LEP), according to the California Health Interview Survey (CHIS). In this brief, author Lacey Hartman, Senior Research Fellow at SHADAC, uses pooled data from the CHIS to provide a comprehensive overview of adults with LEP in the state of California, including this community's demographic characteristics, health outcomes, communication challenges, and access to care. The brief concludes with policy implications and areas for future research to support this vulnerable population. [Read the brief here.](#)

### Blog: Integrated Health Partnerships—Minnesota's Medicaid Accountable Care Organization Model

Minnesota's Integrated Health Partnerships (IHPs) have pioneered a new approach to implementing accountable care organizations (ACOs) for the Medicaid population. In one of our latest blogs, SHADAC staff break down what the IHP program is, how the program was established, how it has evolved, and how it can help in advancing health equity. [Check it out here.](#)



### Annotated Bibliography: Underlying Factors of Medicaid Inequities - Reproductive Oppression in Health Care

With support from the [Robert Wood Johnson Foundation \(RWJF\)](#), and in collaboration with our partner organization [Health Leads](#), SHADAC is exploring the feasibility of developing a Medicaid Equity

Monitoring Tool (MET) to advance health equity across state Medicaid programs (*a MET project [overview can be found here](#)*). As a part of this project, we are developing a component of this tool that would synthesize academic research and grey literature to better understand the “underlying factors” that contribute to inequities in Medicaid. You can find the latest page we’ve made for this resource on [“Reproductive Oppression in Health Care” on our website here](#).

### **SHADAC and University of Minnesota School of Public Health Cannabis Research Center (CRC) Brief: Cannabis Use & Perceptions Among MN High School Students**

In their newest brief, researchers from the CRC and SHADAC used data from the Minnesota Student Survey (MSS) to study youth experiences with and perceptions of cannabis prior to legalization. Interestingly, almost 9 in 10 (86%) Minnesota high school students said in 2022 that they had never used cannabis, and the rate of students saying they had never used cannabis has been increasing over time. Discover more of the findings and potential implications of those findings in the [full brief here](#).

### **2024 Survey Data Season Has Begun!**

Each year, beginning in June and going through September, data from many major federal surveys are released. This includes data from:

- National Health Interview Survey (NHIS)
- Behavioral Risk Factor Surveillance Systems (BRFSS)
- Medical Expenditure Panel Survey (MEPS)
- Current Population Survey (CPS)
- American Community Survey (ACS)



Each year, SHADAC researchers cover each of these releases with a blog, infographic, report, or other product that shares key findings or important data to note from all surveys. We’ve already released a couple of products with more scheduled to release this coming month - be sure to stay up to date by visiting our [Survey Data Season home page here](#) or by clicking the button below.

[Explore Survey Data Season Here](#)

◇ [Register for SHADAC's Upcoming Webinar](#) ◇

## **U.S. Census Bureau Data Explained:**

**Breaking Down 2023 Health Insurance Coverage Estimates from the ACS & CPS**  
*featuring a Q&A with a Census Bureau Expert*

Date: September 26th, 2024  
Time: 1 PM CST (2 PM EST)

SHADAC is hosting a webinar covering the release of 2023 health insurance coverage estimates from two U.S. Census Bureau surveys – the American Community Survey (ACS) and the Current Population Survey (CPS).

Join SHADAC researchers and experts as they explore and discuss insights on new health insurance data at both the national and state levels, by coverage type, and by various other demographic categories. And we are excited to once again welcome Sharon Stern from the Census Bureau, who will be joining us for a Q&A after the presentation. [Register here](#) or at the button below.

[Register for the Webinar Here!](#)

## Data & Policy Resources

### Arizona Health Care Cost Containment System (AHCCCS) Releases Interactive Eligibility Dashboard

The Arizona Health Care Cost Containment System (AHCCCS) launched an interactive dashboard to share member eligibility data from Arizona's Medicaid and CHIP applications. This dashboard provides monthly enrollment reports, including detailed information on demographics and application types (including initial applications, changes, and renewals). [Explore the dashboard here](#).

### National Institute of Environmental Health Sciences (NIEHS): Climate and Health Data Website Launched

A new website - the Climate and Health Outcomes Research Data Systems (CHORDS) - was recently launched by the National Institute of Environmental Health Sciences (NIEHS). CHORDS provides researchers, agencies, and community members with data resources, tools, and training materials exploring how climate and environmental changes may affect the public and community health. Users can sort data and resources based on specific health measures of interest and can search the platform for specific keywords, including searching their catalog for state-level data sources categorized by topic and domain. Access this tool and more information on how to utilize it [here](#).

### Oregon Health Authority: CCO Quality Incentive Program Annual Report and Performance Metrics Dashboard

The Oregon Health Authority is using "quality health metrics to show how well Coordinated Care Organizations (CCOs) are improving care, making quality care accessible, eliminating health disparities, and curbing the rising cost of health care." Their 'Quality Incentive Program' is set up to provide CCOs payments based on annual performance (indicated by specified performance metrics). Learn more about the program and its effects in the [recently released 2023 Annual Report](#), or by exploring the [2022 CCO Performance Metrics Dashboard here](#).

## Recommendations for Our Readers

### [New poll in Washington finds people struggling with health care costs at an alarming rate](#)

"More than half (57%) of respondents have avoided seeking medical treatment or modified their use of prescriptions in the last year due to the cost."

*Sam Hatzenbeler; Economic Opportunity Institute*

### [Amid Medicaid 'Unwinding,' Many States Wind Up Expanding](#)

"[The] Medicaid 'unwinding' led to fears that the number of people without insurance would spike. But it also coincided with moves in more than a dozen states to expand health coverage for lower-income people, including children, pregnant women, and the incarcerated."

*Phil Galewitz; KFF Health News*

## **Counting Everyone: Evidence for Inclusive Measures of Disability in Federal Surveys**

"It is critical that alternate, more inclusive disability questions be identified and tested. We used data from the 2023/2024

National Survey on Health and Disability to explore alternative questions to identify disabled people in national surveys."

*Jean P Hall, Kelsey S Goddard, Catherine Ipsen, Andrew Myers, Noelle K Kurth; Health Affairs Scholar*

---



[unsubscribe from this list](#) | [update subscription preferences](#)

Copyright © 2024 University of Minnesota  
State Health Access Data Assistance Center (SHADAC)  
2221 University Avenue SE, Suite 345, Minneapolis, MN 55414