



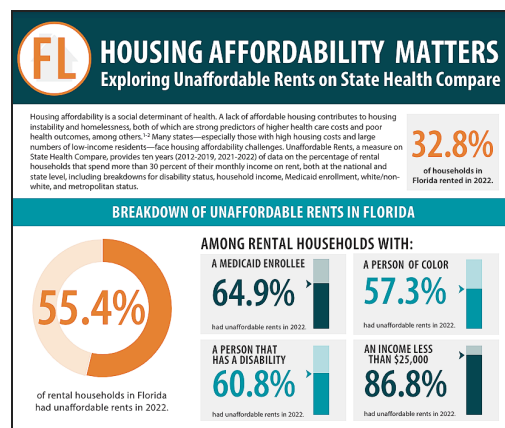
NEWSLETTER

May 2024

SHADAC Announcements

Housing Affordability Matters Infographics Updated

SHADAC updated our state-specific housing affordability infographics using data from the 2022 American Community Survey. We look at affordability of rents in each state along with specific analysis on rent affordability for Medicaid beneficiaries, people of color, those with low incomes, and those with a disability. For example, we found that 55.4% of renters from Florida are considered to have unaffordable rents. When looking just at Medicaid enrollees who rent in Florida, though, the percentage with unaffordable rents jumps to 64.9%. Our updated infographics include 2022 data for each state plus DC and the U.S. as a whole. [Click here](#) to view the full infographics and their accompanying blog post.



Underlying Factors of Medicaid Inequities: Annotated Bibliography

With support from the Robert Wood Johnson Foundation (RWJF), and in collaboration with partner organization Health Leads, SHADAC is exploring whether a new national Medicaid Equity Monitoring Tool could advance health equity across state Medicaid programs. We are developing a component of this tool that would synthesize academic research and grey literature to better understand the root causes or “underlying factors” that may contribute to inequities in Medicaid. You can find the current version of the annotated bibliography along with specific information about the first section of the document, Systemic Racism, on [our website here](#).

Dr. Lynn Blewett Featured on Health Chatter Podcast

SHADAC Director Dr. Lynn Blewett joined Dr. Stan Shanedling and Clarence Jones, M. Ed., CHW, CPH on their ‘Health Chatter’ podcast to discuss health care and insurance access. On this episode, they cover topics like health care cost, state health policy, information and data accessibility, and how listeners can engage in health care topics & issues. [Find the full episode along with related resources and references here](#).

May 2024 Blog and Resource Updates

9 Measures Updated on State Health Compare, including Telehealth Visit Data, Opioid Sales, Adverse Childhood Experiences Data, and more. [Our blog post](#) goes over each updated measure, its data source, and its context in public and population

health

[Our blog](#) **'Tracking Health Insurance Coverage During the Unwinding'** using Household Pulse Survey data was updated using data collected in April 2024

Dr. Kathleen Call, from SHADAC and the University of Minnesota School of Public Health, alongside co-authors Angela Fertig, from the Humphrey School of Public Affairs, and Joanne Pascale, from the U.S. Census Bureau, **published their article on the use of administrative records linked with survey data** to explore how to categorize private marketplace coverage versus public coverage in the redesigned Current Population Survey (CPS) health insurance module. [Read our blog](#) on this publication here, and find the [full article in the Journal of Applied Social Science](#)

State Data News & Resources

Massachusetts: Primary Care Dashboard

The Center for Health Information and Analysis, in collaboration with Massachusetts Health Quality Partners, has published an Interactive Primary Care Dashboard to monitor the health of the primary care system in the Commonwealth. Access to primary care services can lead to improved health outcomes, overall lower costs, and reduce avoidable Emergency Department visits. Their goal is to monitor the availability, cost, capacity, performance, and equity of the primary care system in the state in order to inform policy and evaluate the impact of policy and/or reforms. Learn more about the dashboard and [explore the data here](#).

2023 Colorado Health Access Survey Added Questions on 'Dismissive Treatment'

For the first time, the 2023 Colorado Health Access Survey (CHAS) asked respondents about whether they felt medical providers dismissed their health concerns. Respondents could indicate whether they felt dismissed and provide reasons why they felt dismissed, with response options indicating whether or not medical providers misattributed symptoms to weight or age, concerns/symptoms were ignored, or not being given a treatment plan. Read more about these questions and the other topics explored in the survey on the [CHAS website here](#).

Recommendations for Our Readers

Medicaid 'Unwinding' Decried as Biased Against Disabled People

"Even a brief lapse in Medicaid home health services can fracture relationships that took years to build."

Daniel Chang; KFF Health News

New Policy Removes Barrier to Health Access for DACA Recipients

"A new federal policy ensures people with "Deferred Action for Childhood Arrival" (DACA) status are no longer barred from participating in the Affordable Care Act (ACA) Marketplace."

Erin O'Malley; Every Texan (Formerly Center for Public Policy Priorities)

The Growing Policy Wave of Medical Debt Cancellation: States Taking Action

"Medical debt leads to worsened health outcomes due to the delay or avoidance of care, including skipping needed prescriptions; medical debt also is often detrimental to mental health."

Heather Howard & Laura Buddenbaum; Health Affairs Forefront

